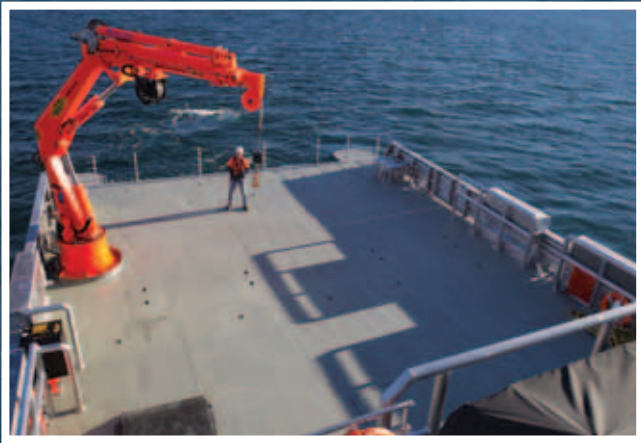




Multi-Purpose Offshore Support Vessel 'Outer Limit'



www.offshoreunlimited.com.au





OUTER LIMIT

Built by Richardson Devine Marine Hobart, Tasmania, Australia, 2012

SURVEY

Class NSCV 2A, 1B, 1C
IMO Number 9643128
Call Sign VJN3640

HULL

Aluminium symmetrical round bilge catamaran, fendering Bow, stern and sides, 11m open transom with boarding platform Rescue doors port and starboard

DIMENSIONS

Overall Length 35m
Beam 11.5m (excluding fenders)
Draft 2.1m

MACHINERY

Main Engines 2 x C32 Acert Caterpillar 1655hp
Gear Box 2 x Twin Disc MGX6599SC with Quick Shift
Propeller 2 x Mikado five blade
Generators 2 x Caterpillar C9 256kva
Bow Thrusters 2 x Electric 90kw

SPEED

Maximum 22 knots
Operating 19 knots @ 75% MCR

CAPACITIES

Deadweight 125 Tonne
Deck 16 x 11m
Bollard Pull 15 Tonne
Fuel 37,000 ltrs
Water 12000 ltrs plus 12000 ltrs per day desalinator
Black Water 6500 ltrs plus 6000 ltrs per day MARPOL approved treatment plant
Power 2 x 256 Kva Gensets 415v 50 Hz 3 Phase
4 x 32 amp reefer outlets
2 x 60 amp outlets

DECK EQUIPMENT

Crane Helia 12 tonnes @ 3m
2.1 tonne @ 13m
Moonpool 1.2 x 1.2m
Winch 20 tonne WLL (optional)
A Frame 15 tonne WLL luffing (optional)

Mooring 4 point
Fully enclosed wheelhouse with all round visibility, twin helm chairs and charters work station

Radar JRC JMA5210 72nm with ARPA
Raymarine E120 48nm
Plotter MaxSea
Raymarine E120 Navionics Charts
Raymarine Raytech
GPS JRC x 2, Raymarine E120
AIS Furuno Class A
Sounder JRC JU250
Raymarine E120
GMDSS JRC JUE85 Sat C
JRC JMS 770S VHF
JRC JSB 196GM HF
Icom handheld GMDSS VHF

Communications Thrane & Thrane
Fleet Broadband 250
Thrane & Thrane VSat 900
Next G
6 x Icom UHF
6 x Icom handheld VHF
Phone to all cabins, engine room and bridge
Wireless Internet
Colour Cameras to working deck, engine rooms
Simrad AP50
Autopilot Colorlight remote
Searchlight Flir night vision
Night Vision Sunto compass
Compass Thorn Monitor, FM200 auto suppression system
Fire System McMurdo 406
EPIRB 3 x 25man RFD SOLAS
Liferafts Full medical room and rescue stretcher
Medical Narwhall SV420 SOLAS
Rescue Boat

ACCOMMODATION & LAYOUT

Total 32 berths in 15 cabins, fully air-conditioned, 32 persons overnight, 56 persons plus 4 crew day trip. TV and DVD in main saloon and each cabin, commercial galley and pantry with 3 x freezers and 3 fridges, filtered chilled water and ice, 8 x toilets and showers, washer and dryer, wet room.

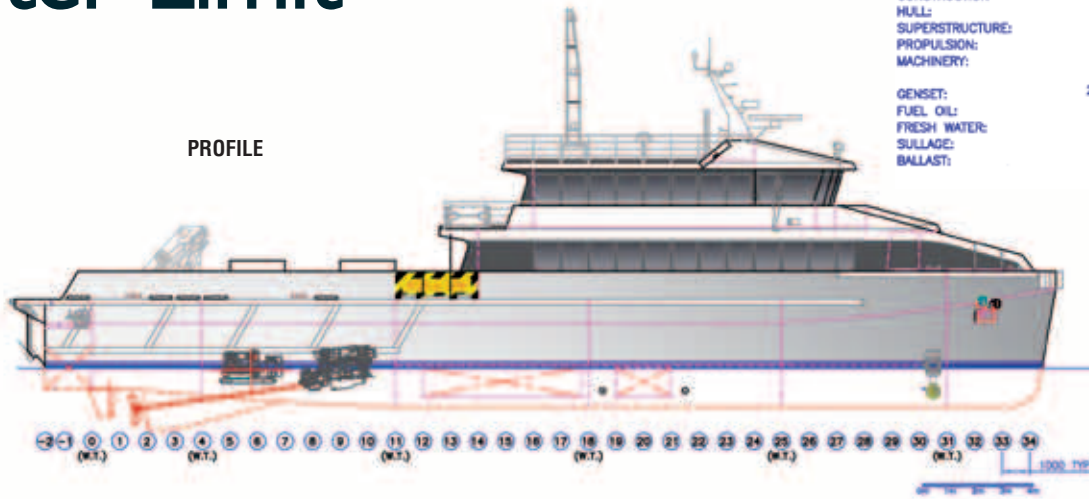


'Outer Limit'

SPECIFICATIONS

OVERALL LENGTH:	34.95m
BEAM: (NOT INCLUDING SPONSONS)	11.50m
DRAFT: (SKEG TIP APPROX.)	2.23m
BERTH CREW:	33
CONSTRUCTION:	ALUMINIUM
HULL:	ALUMINIUM
SUPERSTRUCTURE:	ALUMINIUM
PROPULSION:	PROPELLERS
MACHINERY:	CAT C32 ACERT
	1193kw @ 2300rpm
GENSET:	2 x CAT C9 @ 200ekW
FUEL OIL:	37,000 litres
FRESH WATER:	2,000 litres
SULLAGE:	6,000 litres
BALLAST:	17,000 litres

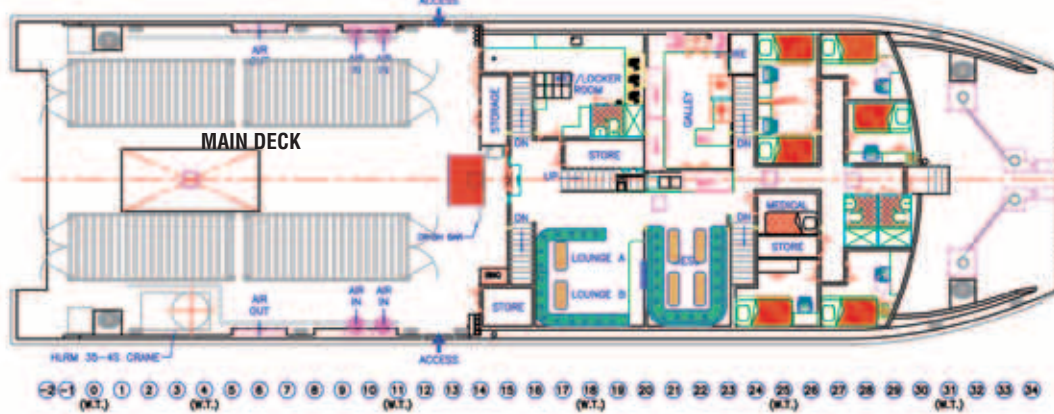
PROFILE



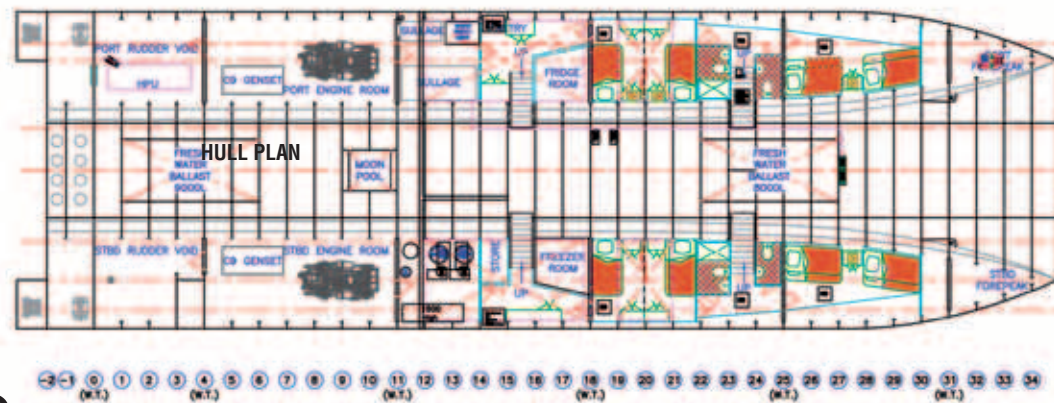
BRIDGE DECK



MAIN DECK



HULL PLAN



OFFSHORE UNLIMITED PTY LTD
 info@offshoreunlimited.com.au
 Tel 03 6235 7157 Fax 03 6235 7199
 www.offshoreunlimited.com.au



OFFSHORE UNLIMITED PTY LTD
info@offshoreunlimited.com.au
Tel 03 6235 7157 Fax 03 6235 7199
www.offshoreunlimited.com.au

